



Deliver More. Deliver Excellence

[www.caliberuniversal.com](http://www.caliberuniversal.com)



# epiq

by Caliber

Enterprise Platform for Integrated Quality

## SOLUTION BRIEF

# Contents

Solution brief	.....	01
Evolution of QMS (Quality Management Systems)	.....	02
The Need for 360° Integration	.....	03
A Simple, Swift Upgrade	.....	04
Comprehensive Suite of Modules	.....	05

## Solution Brief

Quality is the driving force behind successful enterprises. Enterprises often find it difficult to strike the right balance between adapting to digitalization advancements and accelerating deliveries while adhering to stringent quality controls. Moreover, in this process, large volumes of data are generated at every stage. In the absence of an integrated system for quality management, operational efficiency and regulatory compliance are unachievable goals.

### Why Do Data Silos Occur?

Complex organizational structures, independent digital tools, and multiple data sources – all contribute to increasing data silos. People work in isolated teams, departments are disintegrated, and use a wide range of applications. This results in a difficult scenario for information sharing and decision-making. There is data everywhere and it only multiplies over time.

### Data Silos Are Disruptive

Data silos are a major blocker companies deal with today. They create a barrier to information sharing and further lead to inconsistent collaboration across departments. Siloed data hinders the analysis of enterprise-wide data and makes streamlined data governance impossible.

## Data Silos result in many limitations

- Limited view of enterprise-wide data
- Threatens data integrity
- Wasted resources
- Discourages collaborative work

An organization that digitalizes without bringing together data silos will not reap the full benefits of digital transformation. For data-driven decisionmaking, a 360° view of data must be available to contribute to a decision-maker's analyses. With a streamlined flow of enterprise-wide information, businesses can be better prepared to meet the needs of a unified digital enterprise. It also leads to higher efficiency and collaboration across the entire enterprise.

An organization that digitalizes without bringing together data silos will not reap the full benefits of digital transformation. For data-driven decisionmaking, a 360° view of data must be available to contribute to a decision-maker's analyses. With a streamlined flow of enterprise-wide information, businesses can be better prepared to meet the needs of a unified digital enterprise. It also leads to higher efficiency and collaboration across the entire enterprise.

## How QMS Adds Value to Quality Data

Enterprises are exploring innovative ways to apply Quality 4.0 capabilities to complex processes. A quality management system supports by managing core quality processes with intelligent workflows. It enables easier integration, reduces data security risks, provides greater visibility into the data, and leads a resourceful pathway into Quality 4.0. Over the decades, QMS has evolved dramatically to accommodate data integrations and enable enterprise-wide operational excellence.

## Demand More from a QMS

The digital age is paving way for a new world of possibilities for quality management. The next generation QMS solutions incorporate emerging technologies and data connectivity to unimaginable heights.

Smarter processes, consistently reinforced quality culture, seamless manufacturing integration, real-time quality intelligence, and reduced complexity are only a few of the advantages. An integrated quality system at an enterprise level will lead to increased visibility, operational integration, and cost-efficiency while also firmly supporting regulatory compliance.

## Evolution of QMS (Quality Management Systems)

### Manual QMS

Paper-based processes

### Digital QMS

Scaled AI and ML,  
Optimized QMS,  
Riskbased decision-making,  
Connected product life cycle

### Connected QMS

Integrated data platform,  
Optimized QMS,  
Risk-based decision-making  
Connected product life cycle

### Enterprise-Integrated QMS

Scaled AI and ML,  
Integrated data platform,  
Optimized QMS,  
Riskbased decision-making

## What ROI Can a Robust QMS Offer?

- **Quality standards** tailored to specific business goals
- **Reduced downtime**, rework, product recalls, repair costs, customer complaints, and returns
- **Seamless integration** between quality, document, and competency management
- **Easy access** to cross-departmental data
- **Reduced risks** related to data integrity
- **Solid foundation** for quality metrics, CPV, product quality review, and business intelligence
- **Compliance** with ALCOA+, GAMP 5, 21 CFR part 11, Annexure 11, and other regulations
- **More time** for product improvement and innovation
- **Accelerated production** and release cycle times

## The Need for 360° Integration

Quality, documentation, and competency are interconnected and interdependent. A change triggered in any of these quality systems is reflected in the other and needs further action to complete the cycle. This requires complete integration of quality processes across verticals that eventually promotes an all-inclusive enterprise-wide solution.

## epiq by Caliber - Enterprise Platform for Integrated Quality

epiq by Caliber is an Integrated Quality Management platform that goes beyond regular quality management requirements. It is a unified platform that provides enterprises with powerful, preconfigured, highly customizable, simple, scalable, and ready-to-use automated quality management software. It allows for smooth inter-departmental information exchange and further builds a robust foundation for quality metrics.



### One Platform - 3 Solutions

EPIQ offers a single platform for Quality Assurance (assure-iq), Document Management (docs-iq), and Learning Management (learn-iq). An innovative, cost-efficient platform, epiq provides an in-depth integration across departments making it far more capable of providing a seamless quality management experience like no other.

## A Sample Use Case

### Quality Processes + Document Management

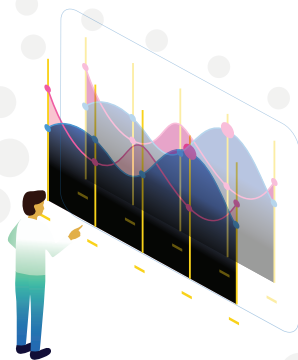
A change control raised in assure-iq needs a document modification or creation. docs-iq manages the document lifecycle and then the change request can be closed in assure-iq.

### Document Management + Learning Management

Training requirement is identified after a new document creation or existing document modification

### Quality Processes + Learning Management

Change control raised in assure-iq for SOPs that needs training can be pushed to learn-iq for training needs



## A Simple, Swift Upgrade

epiq is an EQMS that can be built on pre-defined enterprise objectives for quality and regulatory requirements in a cost-efficient manner. It reshapes the quality objectives in new ways and expands the scope by reframing the role of quality in modern enterprises. epiq scales up on an existing QMS. Thus, an upgrade to epiq is a simple, hassle-free transition.

### Connected & Compliant Enterprise Solution

With quality infused at every step of the product lifecycle, epiq ensures quality and compliance throughout the process. The IQM framework proposes a data-centric quality mindset. It is a robust platform that allows for single sign-on (SSO) capability for quality assurance, learning management, and document management.

### Continuous Process Verification (CPV)

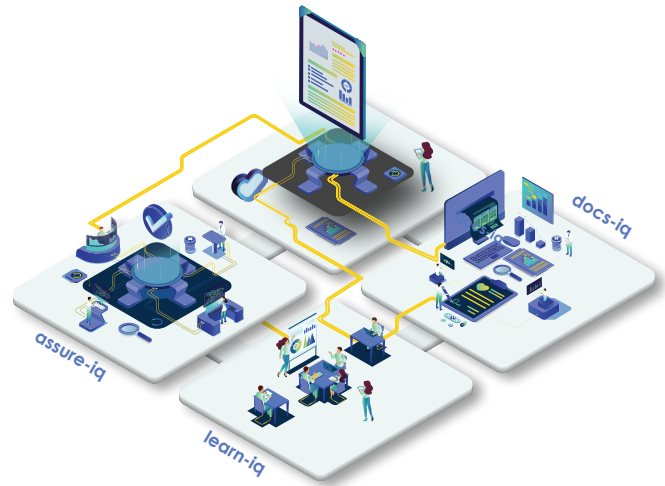
epiq enables continuous monitoring of quality attributes and process parameters. This continual assurance during routine production ensures that the manufacturing processes are in a state of control. It also ensures that the CPP and CQA values are within control limits prior to batch release. With epiq, enterprises not only achieve regulatory compliance, but also helps mitigate process vulnerabilities and prevent batch discards.

## Key Features

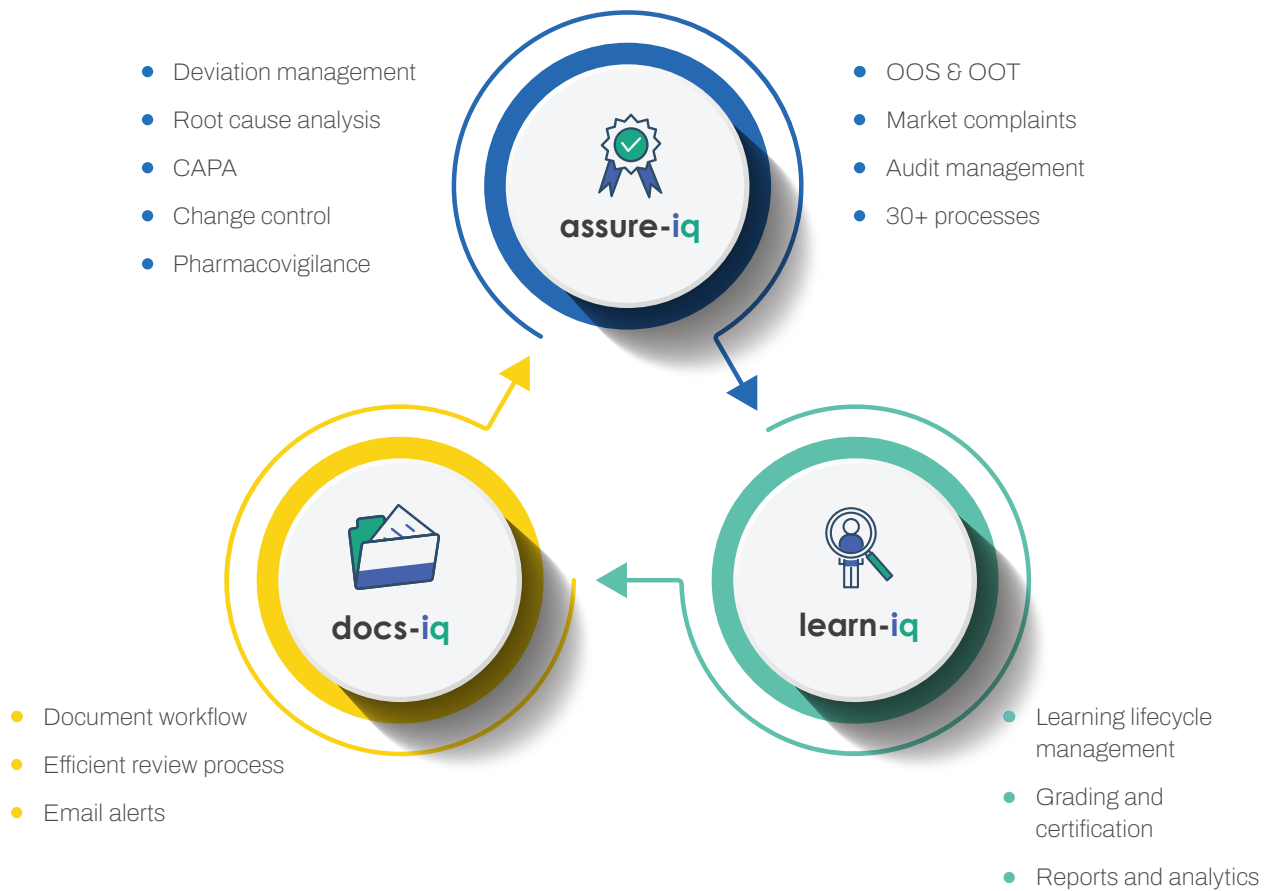
Easy to configure | Actionable analytics | Seamless integration | Integrated reporting engine | Single administrator window  
Single sign-on capability | Integrated messaging & alert systems | Instant product quality reviews

## Promising a Graceful Digital Move

Digital solutions can be overwhelming. epiq presents a simple but powerful approach to enterprise-level integration. The unified solution enables enterprises to collaborate information and simplifies the process of busting silos forever. epiq by Caliber is the next-gen solution for future-ready enterprises. Comprising of three independent modules – assure-iq, docs-iq, and learn-iq, epiq revolutionizes and unifies quality systems to provide an integrated, enterprise-wide platform.



## Comprehensive Suite of Modules





Be a Quality  
All-rounder with **epiq**

**Contact us:**

Write to:  
[sales@caliberuniversal.com](mailto:sales@caliberuniversal.com)

**North America**  
1 888 510 LIMS

**India**  
91 95509 56829

**Asia Pacific**  
86 (10) 86399268

**Bangladesh**  
(880)-2-5881-0881

**UK & Europe**  
(44) 07758792855

[www.caliberuniversal.com](http://www.caliberuniversal.com)

Caliber offers the widest range of solutions for Process Automation, Quality Management, and Regulatory Compliance for highly regulated industries. Our key differentiator is our product suite which gives companies the unique opportunity to achieve Integrated Quality Management with a single suite of products.

**Contact us now for a demo!**



LEADING  
TRANSFORMATION  
SINCE 2001

Copyright © 2023, Caliber